



**EMRO** WARE™

**STAIR RAIL  
BRACKETS**

## Stair and Hand Rail Brackets

### Stainless Steel Brackets



**Deluxe concealed curved top bracket SS441CT**

**Extension**

60mm

**Material**

Satin stainless steel G304 with 60mm backing plate and socket lag screw

Internal use only



**Deluxe concealed flat top bracket SS441FT**

**Extension**

60mm

**Material**

Satin stainless steel G304 with 60mm backing plate and socket lag screw

Internal use only



**Deluxe concealed curved top bracket SS441CTG316S**

**Extension**

60mm

**Material**

Satin stainless steel G316 with 60mm backing plate and socket lag screw

External or internal use



**Deluxe concealed flat top bracket SS441FTG316S**

**Extension**

60mm

**Material**

Satin stainless steel G316 with 60mm backing plate and socket lag screw

External or internal use



**Deluxe concealed curved top bracket SS441DBCT**

**Extension**

60mm

**Material**

Satin stainless steel G304 with M10 bolt and 40mm washer

Internal use only



**Deluxe concealed flat top bracket SS441DBFT**

**Extension**

60mm

**Material**

Satin stainless steel G304 with M10 bolt and 40mm washer

Internal use only



**Deluxe concealed curved top bracket SS441DLCT**

**Extension**

60mm

**Material**

Satin stainless steel G304 with M10 lag screw and 40mm washer

Internal use only



**Deluxe concealed flat top bracket SS441DLFT**

**Extension**

60mm

**Material**

Satin stainless steel G304 with M10 lag screw and 40mm washer

Internal use only



**Extended concealed curved top bracket SS443CT**

**Extension**

80mm

**Material**

Satin stainless steel G304  
Internal use only



**Extended concealed curved top bracket SS443CTP**

**Extension**

80mm

**Material**

Polished stainless steel G304  
Internal use only



**Extended concealed flat top bracket SS443FT**

**Extension**

80mm

**Material**

Satin stainless steel G304  
Internal use only



**Extended concealed flat top bracket SS443FTP**

**Extension**

80mm

**Material**

Polished stainless steel G304  
Internal use only



**Extended exposed curved top bracket SS444CT**

**Extension**

80mm

**Material**

Satin stainless steel G304  
Internal use only



**Extended exposed flat top bracket SS444FT**

**Extension**

80mm

**Material**

Satin stainless steel G304  
Internal use only



**Extended exposed curved top bracket SS444CTG316**

**Extension**

80mm

**Material**

Polished stainless steel G316  
External or internal use



**Extended exposed flat top bracket SS444FTG316**

**Extension**

80mm

**Material**

Polished stainless steel G316  
External or internal use



**Extended exposed curved top bracket SS444CTG316S**

**Extension**

80mm

**Material**

Satin stainless steel G316

External or internal use



**Extended exposed flat top bracket SS444FTG316S**

**Extension**

80mm

**Material**

Satin stainless steel G316

External or internal use



**Straight curved top bracket SS445CT**

**Extension**

60mm

**Material**

Satin stainless steel G304

Internal use only



**Straight flattop bracket SS445FT**

**Extension**

60mm

**Material**

Satin stainless steel G304

Internal use only



**Deluxe concealed straight curved top bracket SS4455CT**

**Extension**

60mm

**Material**

Satin stainless steel G304 with 60mm washer and socket lag screw

Internal use only



**Deluxe concealed straight flat top bracket SS4455FT**

**Extension**

60mm

**Material**

Satin stainless steel G304 with 60mm washer and socket lag screw

Internal use only



**Deluxe concealed straight curved top bracket SS4455120CT**

**Extension**

Can be manufactured 30mm to 120mm

**Material**

Satin stainless steel G304 with 60mm washer and socket lag screw

Internal use only



**Deluxe concealed straight flat top bracket SS4455120FT**

**Extension**

Can be manufactured 30mm to 120mm

**Material**

Satin stainless steel G304 with 60mm washer and socket lag screw

Internal use only



**Extended concealed curved top bracket SS80CT**

**Extension**

80mm

**Material**

Satin stainless steel G304

Internal use only



**Extended concealed flat-top bracket SS80FT**

**Extension**

80mm

**Material**

Satin stainless steel G304

Internal use only



**Extended concealed curved top bracket SS80CTP**

**Extension**

80mm

**Material**

Polished stainless steel G304

Internal use only



**Extended concealed flat top bracket SS80FTP**

**Extension**

80mm

**Material**

Polished stainless steel G304

Internal use only



**Extended concealed curved top bracket for glass SS80GCT**

**Extension**

80mm

**Material**

Satin stainless steel G304

Internal use only



**Extended concealed flat top bracket for glass SS80GFT**

**Extension**

80mm

**Material**

Satin stainless steel G304

Internal use only



**Extended concealed hollow arm curved top bracket SS80HCT**

**Extension**

80mm

**Material**

Satin stainless steel G304 with cover plate and hollow arm for LED light cable

This bracket is non-load bearing

Internal use only



**Extended concealed hollow arm flat top bracket SS80HFT**

**Extension**

80mm

**Material**

Satin stainless steel G304 with cover plate and hollow arm for LED light cable

This bracket is non-load bearing

Internal use only



**Extended concealed no top bracket SS80NT**

**Extension**

80mm

**Material**

Satin stainless steel G304

Internal use only



**Commercial Square CT-FT bracket SS601CT-FT**

**Extension**

80mm

**Material**

Polished stainless steel G316 with conversion insert CT-FT and M5 x 40mm socket head cap screw

External or internal use



**Commercial exposed square curved top bracket SS606CT**

**Extension**

80mm

**Material**

Polished stainless steel G316

External or internal use



**Commercial exposed square flat top bracket SS606FT**

**Extension**

80mm

**Material**

Polished stainless steel G316

External or internal use



**Commercial curved top bracket for glass SS620GCT**

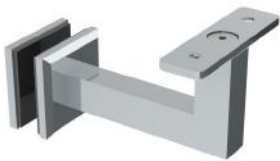
**Extension**

80mm

**Material**

Polished stainless steel G316

External or internal use



**Commercial flat top bracket for glass SS620FCT**

**Extension**

80mm

**Material**

Polished stainless steel G316

External or internal use



**Commercial Exposed CT-FT bracket SS680CT-FT**

**Extension**

80mm

**Material**

Polished stainless steel G316 with conversion insert CT-FT

External or internal use



**Commercial Exposed CT-FT bracket SS681CT-FT**

**Extension**

80mm

**Material**

Polished stainless steel G316 with conversion insert CT-FT

External or internal use



**Commercial Exposed CT-FT bracket SS681CT-FTG304S**

**Extension**

80mm

**Material**

Satin stainless steel G304

Internal use only



## Stainless Steel Bases and Washers



### SSBASE25

#### Measurements

25mm to suit SS441 and SS4455

#### Material

Satin stainless steel G304



### SSBASE40

#### Measurements

40mm to suit SS441 and SS4455

#### Material

Satin stainless steel G304



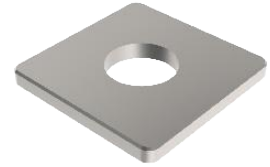
### SSBASE60

#### Measurements

60mm to suit SS441 and SS4455

#### Material

Satin stainless steel G304



### SSBASESQ40X40

#### Measurements

40x40mm to suit SS441 and SS4455

#### Material

Satin stainless steel G304



### SSBASESQ60X60

#### Measurements

60x60mm to suit SS441 and SS4455

#### Material

Satin stainless steel G304



### LAGEXT80

#### Measurements

80mm lag screw to suit timber

## Cast Brackets



**Conventional Bracket 440CP**

**Extension**

60mm

**Material**

Zinc / Chrome Plated



**Conventional Bracket 440FB**

**Extension**

60mm

**Material**

Zinc / Florentine Bronze



**Conventional Bracket 440GBL**

**Extension**

60mm

**Material**

Zinc / Gloss Black



**Conventional Bracket 440MB**

**Extension**

60mm

**Material**

Zinc / Matt Black



**Conventional Bracket 440GP**

**Extension**

60mm

**Material**

Zinc / Gold Plated



**Conventional Bracket 440SP**

**Extension**

60mm

**Material**

Zinc / Satin



**Conventional Bracket 440WH**

**Extension**

60mm

**Material**

Zinc / White



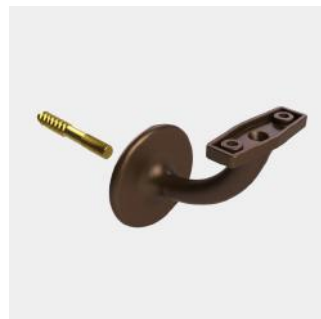
**Centre Concealed Bracket 442CP**

**Extension**

60mm

**Material**

Zinc / Chrome Plated



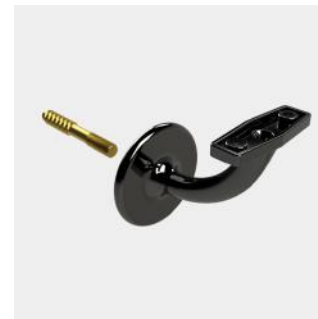
**Centre Concealed Bracket 442FB**

**Extension**

60mm

**Material**

Zinc / Florentine Bronze



**Centre Concealed Bracket 442GBL**

**Extension**

60mm

**Material**

Zinc / Gloss Black



**Centre Concealed Bracket 442MBL**

**Extension**

60mm

**Material**

Zinc / Matt Black





**Centre Concealed Bracket 442GP**

**Extension**

60mm

**Material**

Zinc / Matt Black



**Centre Concealed Bracket 442SP**

**Extension**

60mm

**Material**

Zinc / Satin



**Extended Concealed Bracket 443CP**

**Extension**

80mm

**Material**

Zinc / Chrome Plated



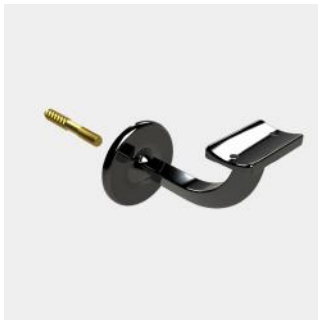
**Extended Concealed Bracket 443FB**

**Extension**

80mm

**Material**

Zinc / Florentine Bronze



**Extended Concealed Bracket 443GBL**

**Extension**

80mm

**Material**

Zinc / Gloss Black



**Extended Concealed Bracket 443MBL**

**Extension**

80mm

**Material**

Zinc / Matt Black



**Extended Concealed Bracket 443GP**

**Extension**

80mm

**Material**

Zinc / Matt Black



**Extended Concealed Bracket 443SP**

**Extension**

80mm

**Material**

Zinc / Satin





**Extended Bracket 444CP**

**Extension**

80mm

**Material**

Zinc / Chrome Plated



**Extended Bracket 444FB**

**Extension**

80mm

**Material**

Zinc / Florentine Bronze



**Extended Bracket 444GBL**

**Extension**

80mm

**Material**

Zinc / Gloss Black



**Extended Bracket 444CMBL**

**Extension**

80mm

**Material**

Zinc / Matt Black



**Extended Bracket 444GP**

**Extension**

80mm

**Material**

Zinc / Gold Plated



**Extended Bracket 444SP**

**Extension**

80mm

**Material**

Zinc / Satin



**Extended Bracket 444WH**

**Extension**

80mm

**Material**

Zinc / White



**Straight Bracket 445CP**

**Extension**

60mm

**Material**

Zinc / Chrome Plated



**Straight Bracket 445FB**

**Extension**

60mm

**Material**

Zinc / Florentine Bronze



**Straight Bracket 445GBL**

**Extension**

60mm

**Material**

Zinc / Gloss Black



**Straight Bracket 445MBL**

**Extension**

60mm

**Material**

Zinc / Matt Black



**Straight Bracket 445GP**

**Extension**

60mm

**Material**

Zinc / Gold Plated



**Straight Bracket 445SP**

**Extension**

60mm

**Material**

Zinc / Satin



**Straight Bracket 445WH**

**Extension**

60mm

**Material**

Zinc / White



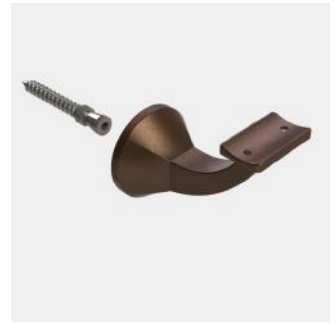
**Deluxe Concealed Curved top Bracket 446CTCP**

**Extension**

80mm

**Material**

Zinc / Chrome Plated



**Deluxe Concealed Curved top Bracket 446CTFB**

**Extension**

80mm

**Material**

Zinc / Florentine Bronze



**Deluxe Concealed Curved top Bracket 446CTGBL**

**Extension**

80mm

**Material**

Zinc / Gloss Black



**Deluxe Concealed Curved top Bracket 446CTMBL**

**Extension**

80mm

**Material**

Zinc / Matt Black



**Deluxe Concealed Curved top Bracket 446CTGP**

**Extension**

80mm

**Material**

Zinc / Gold Plated



**Deluxe Concealed Curved top Bracket 446CTSP**

**Extension**

80mm

**Material**

Zinc / Satin



**Deluxe Concealed flat top Bracket 446FTCP**

**Extension**

80mm

**Material**

Zinc / Chrome Plated



**Deluxe Concealed flat top Bracket 446FTFB**

**Extension**

80mm

**Material**

Zinc / Florentine Bronze



**Deluxe Concealed flat top Bracket 446CTGBL**

**Extension**

80mm

**Material**

Zinc / Gloss Black



**Deluxe Concealed flat top Bracket 446CTMBL**

**Extension**

80mm

**Material**

Zinc / Matt Black



**Deluxe Concealed flat top Bracket 446FTGP**

**Extension**

80mm

**Material**

Zinc / Gold Plated



**Deluxe Concealed flat top Bracket 446FTSP**

**Extension**

80mm

**Material**

Zinc / Satin



**Conventional Bracket 448CP**

**Extension**

60mm (top screw holes 25mm apart)

**Material**

Zinc / Chrome Plated



**Conventional Bracket 448FB**

**Extension**

60mm (top screw holes 25mm apart)

**Material**

Zinc / Florentine Bronze



**Conventional Bracket 448GBL**

**Extension**

60mm (top screw holes 25mm apart)

**Material**

Zinc / Gloss Black



**Conventional Bracket 448MBL**

**Extension**

60mm (top screw holes 25mm apart)

**Material**

Zinc / Matt Black



**Conventional Bracket 448GP**

**Extension**

60mm (top screw holes 25mm apart)

**Material**

Zinc / Gold Plated



**Conventional Bracket 448SP**

**Extension**

60mm (top screw holes 25mm apart)

**Material**

Zinc / Satin



**Extended Bracket 449CP**

**Extension**

80mm (top screw holes 25mm apart)

**Material**

Zinc / Chrome Plated



**Extended Bracket 449FB**

**Extension**

80mm (top screw holes 25mm apart)

**Material**

Zinc / Florentine Bronze



**Extended Bracket 449GBL**

**Extension**

80mm (top screw holes 25mm apart)

**Material**

Zinc / Gloss Black



**Extended Bracket 449MBL**

**Extension**

80mm (top screw holes 25mm apart)

**Material**

Zinc / Matt Black



**Extended Bracket 449GP**

**Extension**

80mm (top screw holes 25mm apart)

**Material**

Zinc / Gold Plated



**Extended Bracket 449SP**

**Extension**

80mm (top screw holes 25mm apart)

**Material**

Zinc / Satin



**Architectural Concealed Curved Top Bracket 4461CTCP**

**Extension**

80mm

**Material**

Zinc / Chrome Plated



**Architectural Concealed Curved Top Bracket 4461CTFB**

**Extension**

80mm

**Material**

Zinc / Florentine Bronze



**Architectural Concealed Curved Top Bracket 4461CTGBL**

**Extension**

80mm

**Material**

Zinc / Gloss Black



**Architectural Concealed Curved Top Bracket 4461CTMBL**

**Extension**

80mm

**Material**

Zinc / Matt Black



**Architectural Concealed Curved Top Bracket 4461CTGP**

**Extension**

80mm

**Material**

Zinc / Gold Plated



**Architectural Concealed Curved Top Bracket 4461CTSP**

**Extension**

80mm

**Material**

Zinc / Satin



**Architectural Concealed Flat top Bracket 4461FTCP**

**Extension**

80mm

**Material**

Zinc / Chrome Plated



**Architectural Concealed Flat top Bracket 4461FTFB**

**Extension**

80mm

**Material**

Zinc / Florentine Bronze



**Architectural Concealed Flat top Bracket 4461FTGBL**

**Extension**

80mm

**Material**

Zinc / Gloss Black



**Architectural Concealed Flat top Bracket 4461FMBL**

**Extension**

80mm

**Material**

Zinc / Matt Black



**Architectural Concealed Flat top Bracket 4461FTGP**

**Extension**

80mm

**Material**

Zinc / Gold Plated



**Architectural Concealed Flat top Bracket 4461FTSP**

**Extension**

80mm

**Material**

Zinc / Satin



**Architectural Concealed Curved top 4462CP**

**Extension**

80mm

**Material**

Zinc / Chrome Plated



**Architectural Concealed Curved top 4462FB**

**Extension**

80mm

**Material**

Zinc / Florentine Bronze



**Architectural Concealed Curved top 4462GBL**

**Extension**

80mm

**Material**

Zinc / Gloss Black



**Architectural Concealed Curved top 4462MBL**

**Extension**

80mm

**Material**

Zinc / Matt Black



**Architectural Concealed Curved top 4462GP**

**Extension**

80mm

**Material**

Zinc / Gold Plated



**Architectural Concealed Curved top 4462**

**Extension**

80mm

**Material**

Zinc / Satin







**Architectural Concealed flat top 4472CP**

**Extension**

80mm

**Material**

Zinc / Chrome Plated



**Architectural Concealed flat top 4472FB**

**Extension**

80mm

**Material**

Zinc / Florentine Bronze



**Architectural Concealed flat top 4472GBL**

**Extension**

80mm

**Material**

Zinc / Gloss Black



**Architectural Concealed flat top 4472MBL**

**Extension**

80mm

**Material**

Zinc / Matt Black



**Architectural Concealed flat top 4472GP**

**Extension**

80mm

**Material**

Zinc / Gold Plated



**Architectural Concealed flat top 4472SP**

**Extension**

80mm

**Material**

Zinc / Satin



**EMRO** WARE™

Proudly Australian owned and operated since 1958

20 Enterprise Street  
Caloundra, QLD 4551  
T +61 7 5491 3566  
E sales@emro.com.au

To view our full range of products visit  
[www.emro.com.au](http://www.emro.com.au)